

BLACKHAWK®



HD 30 CAB BENCH

CONTROL, ANCHORING AND REBUILDING BENCH FOR TRUCK CABS

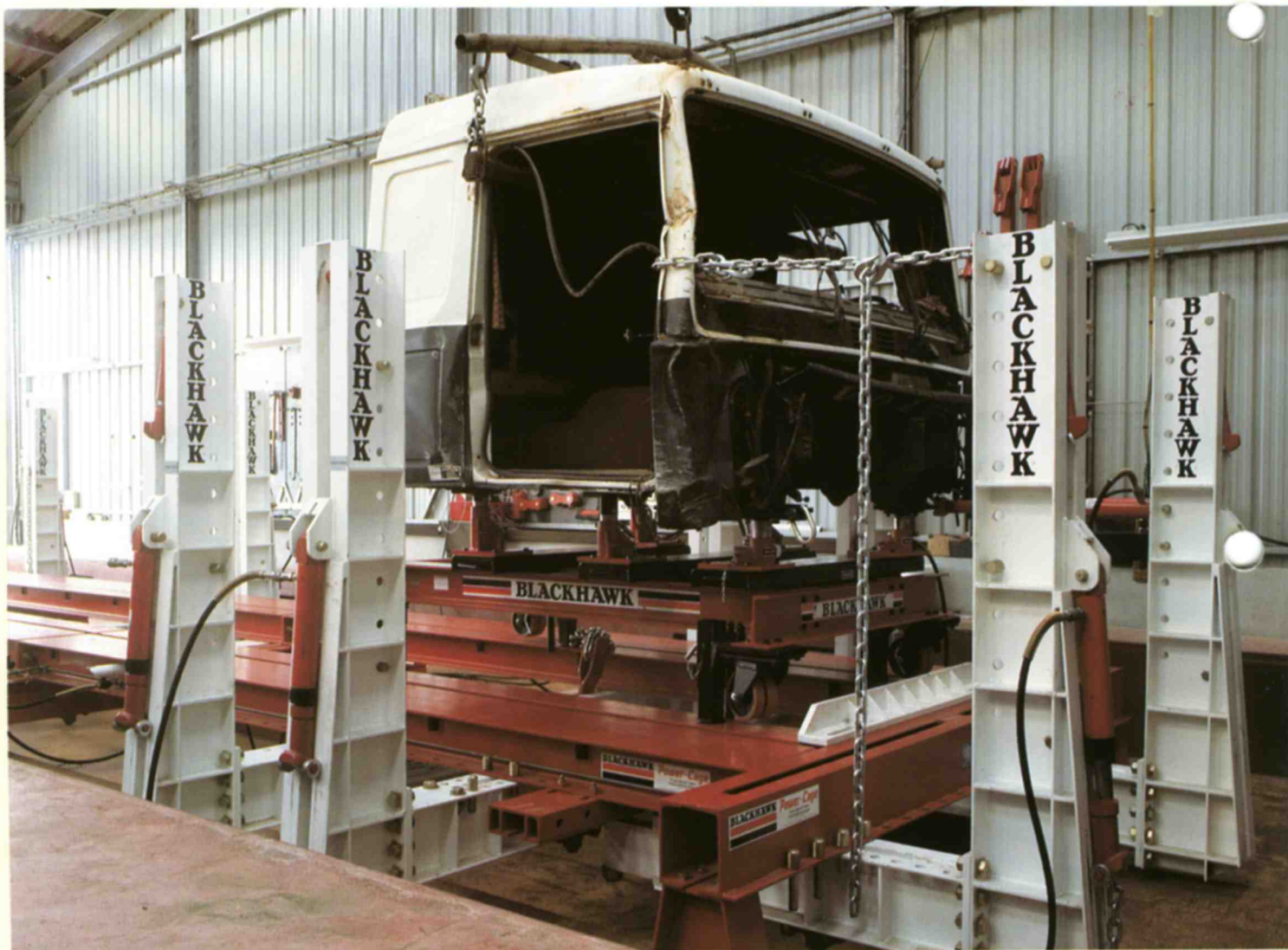
Small investment for big repairs!
Progressive installation wherever the
floor is of concrete. (Further pots
can be added as required)
Easy installation: Cab Bench is also
working without Power Cage®.



**A bench especially designed for truck
cabs.**

Cab Bench: to straighten truck cabs, a
complete bench, ultra-robust and featuring high
performance using universal transverse beams
and modular brackets.

Working on Power Cage®

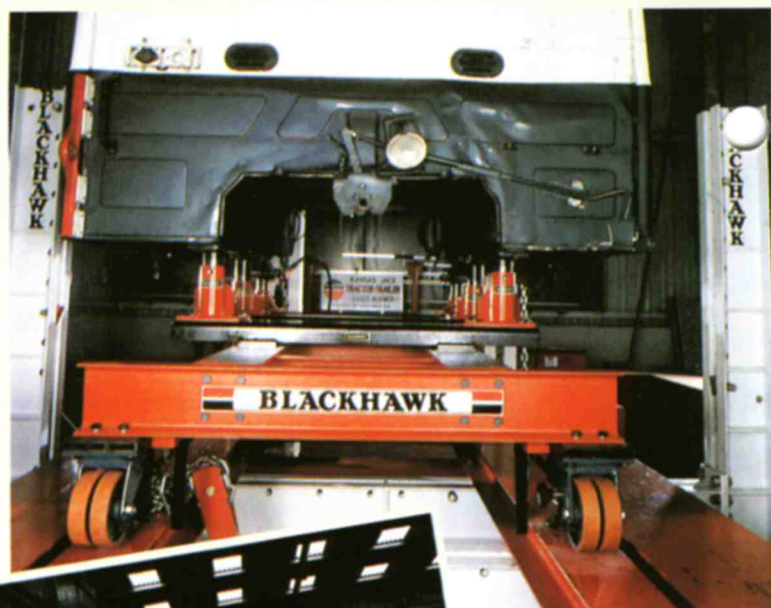


↑ The 6 towers of the **Power Cage®** (pull or push) are used for straightening.

Pulling: you have the choice!

CAB BENCH is designed for use with the following straightening systems:

- **Power Cage®** (multiple pulls and pushes),
- Advanced pulling towers such as **Power Post**, **Maxi-Tower** or **King Post®**.
- **Special Modular bases for truck use.**
They receive the head brackets which determine the cab's anchoring points on the truck frame or the position of the side members.





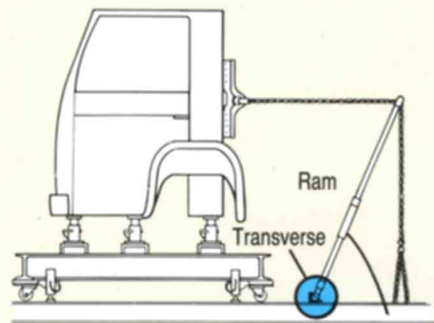
Plenty of room to work!

- Comfortable working height.
- Excellent clearance between bench, side members and the cab's floor...

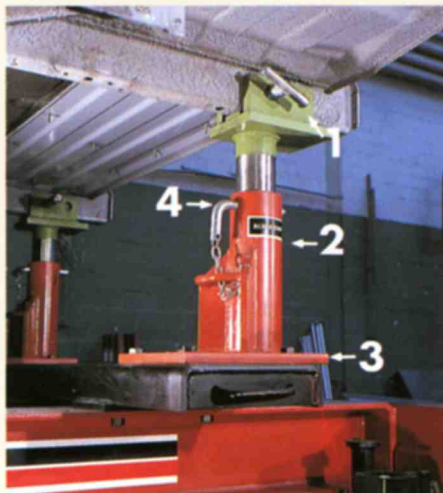
Supported by brackets, the cab is securely anchored at two or more points.



Adjustable vertical extensions of the towers. Enable pulls to be made to the cab top.



Rear of cab. Attached to the **Power Cage**® runways, a transverse beam provides support to the ram(s) during the pulls using the vector principle.



Brackets for truck cabs.

Bracket head (1) mounted on universal support (2) attached to a transverse (3).

Whilst straightening a pin (4) releases the top head. It goes down into its universal support in order not to obstruct pulling.



(5) Pulling plate

By simply pinning, one or two pull clamps are anchored for one or two simultaneous pulls (in all directions).

See page 5: Pull clamp HD 304.



Leg of Cab Bench firmly attached to the **Power Cage**® runways with quick anchorage.

Working on the floor



On the floor, direct screwing of the Cab Bench's legs in threaded anchor pots AFM 8104.

Another example:

- Attachment by chain and tensioners with anchor pots Ty-Down® TD 135. (See pages 5 and 6).

Light vehicles
The tower can also be used for straightening a light vehicle or a small van, i.e. on Power Lok® system anchored to pots (see Korek® catalogue).



Rapid anchoring using threaded anchor pots AFM 8104. Collapsible wheel.



Option HD 306

Anchoring set mounted on HD 302 vertical extension.



The tower Power Post can use one or more extensions for pulls at highest roof levels. With the same power, if necessary, as for low pulls.

STRAIGHTENING FROM THE OUTSIDE GIVES MANY ADVANTAGES:

- pulls from outside give clear surface below the cab
- free access to underbody
- excellent clearance for downward pulling, pushing, supporting and carrying out all straightening operations
- unrestricted number of pulls and pushes
- clear orientation and really precise angles of straightening one after the other or simultaneous.



On cabs lacking anchor points at the rear of side members (i.e. Volvo cab) the anchoring is done on pinch weld.

Mobility

Comfortable working height



Cab Bench anchored on threaded anchor pots **AFM 8104**. Pulls on side members with **Power Post Tower**.

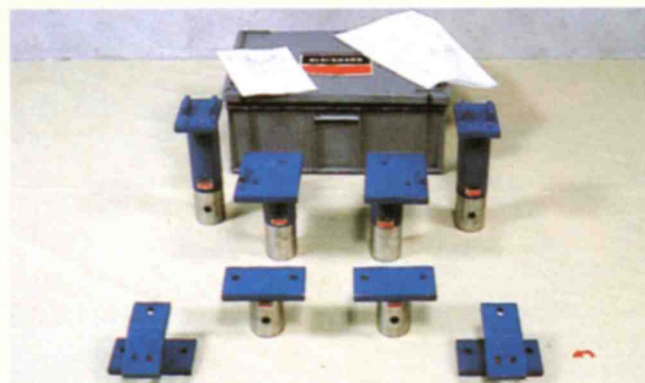


Power Post tower: support and pull combined. Even at this height, the maximum pull is equal to that obtained at lower heights.

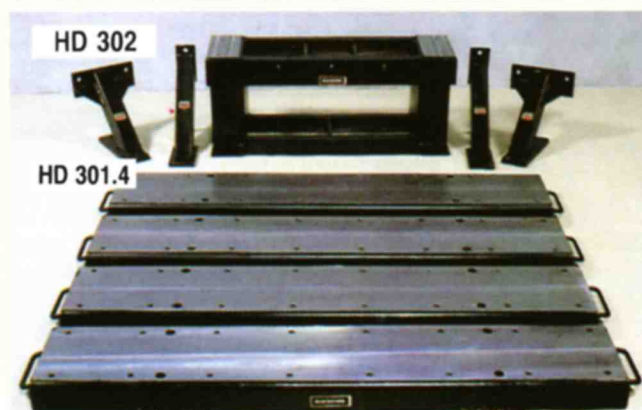
HD 30 Basic set.



HD 300



Example of brackets (not included in set)



HD 302

HD 301.4



HD 303

Set of 8 modular bracket bases.



B 036

Water level



HD 304

Pull clamp.



Option **B 044**

Downward pull by means of the "transverse + pulley" = **B 044** set.

Diagonal pull: power doubled using a pulley block. Note how easy outside straightening is by positioning all around the bench (see *Pulling Towers* catalogue).



Description

Description	Weight	Basic set	Direct anchoring on Power Cage®	Direct anchoring with Ty-Down® anchor pots	Anchoring with tensioners on anchor pots	Anchoring with tensioners on frame
		HD 30	HD 31 L	HD 32 CA	HD 32	HD 33
HD 300 W Truck cab control bench including water level B 036	550 kg	1	1	1	1	1
HD 301.4 Set of 4 universal transverse beams	65 kg	1	1	1	1	1
HD 302 Vertical extension	134 kg	1	1	1	1	1
HD 303 Set of 8 modular bracket bases	148 kg	1	1	1	1	1
HD 304 Special pull clamp	4.3 kg	1	1	1	1	1
HD 458 Leg set and castors for anchoring on floor - Power Cage®			1			
HD 460 Leg set and castors for anchoring on floor - Ty-Down®				1		
HD 461 Leg set and castors for anchoring with tensioners		1			1	1
TD 130 Ty-Down® anchor pots	8 kg				4	
AFM 8104 Power Lok® anchor pots				8		
HD 8301 Chain anchoring device	6 kg					6
HD 8303 Chain tensioner	4 kg				4	4
K 238 320 Wedge	0.8 kg					12

BLACKHAWK



BLACKHAWK® reserves the right to make changes in the catalogue at any time.

BLACKHAWK S.A. - Centre Eurofrêt - Rue du Rheinfeld - B.P. 5 - 67026 STRASBOURG CEDEX FRANCE - Tel. +33 3 88 65 76 30 - Fax +33 3 88 65 76 31

BLACKHAWK S.A. (Division Internationale) - Centre Eurofrêt - Rue du Rheinfeld - B.P. 5 67026 STRASBOURG CEDEX - FRANCE - Tel. +33 3 88 65 76 57 - Fax +33 3 88 65 76 51

BLACKHAWK AUTOMOTIVE Ltd - Leacon Road - ASHFORD KENT TN23 4UA GREAT BRITAIN - Tel. 01233 632 151 - Fax 01233 641 748

BLACKHAWK GmbH - Postfach 2064 - 77680 KEHL GERMANY - Tel. 07851/5026 - Fax 07851/75914

BLACKHAWK ITALIA SRL - Via dell'Industria 5 - 37066 SOMMACAMPAGNA - VERONA ITALY - Tel. 045 896 0477 - Fax 045 896 0386